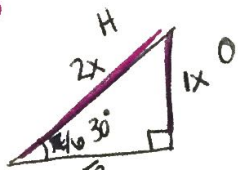


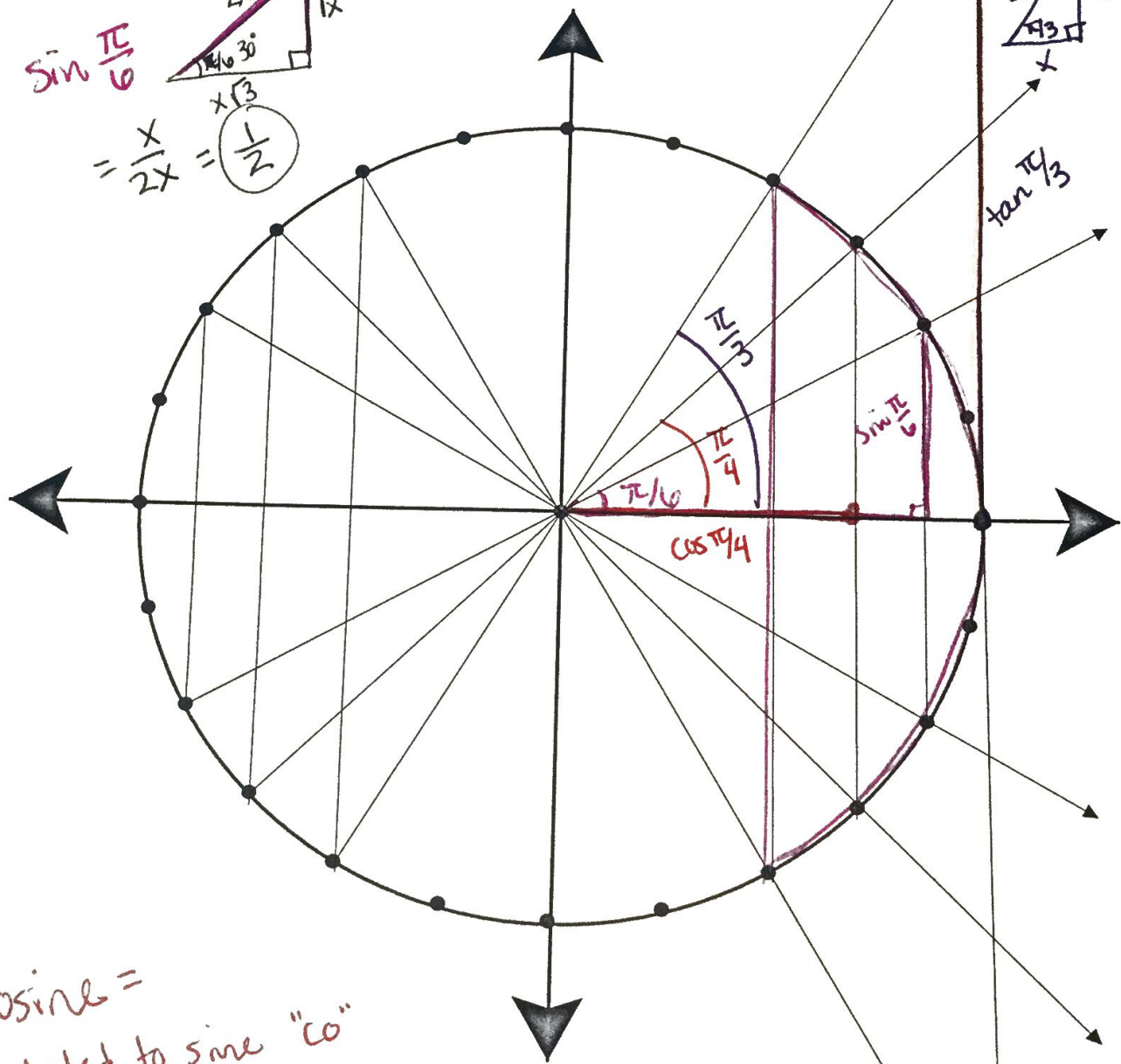
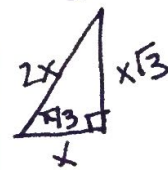
Sine = bow in Sanskrit

- vertical leg of triangle
- y-coordinate

$\sin \frac{\pi}{6}$   
  
 $= \frac{x}{2x} = \frac{1}{2}$

tangent = length of the tangent line from O to the ray & each radian

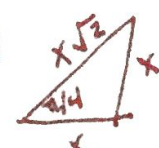
$\tan \frac{\pi}{3} = \frac{x\sqrt{3}}{x} = \sqrt{3}$



Cosine =

related to sine "co"

- horizontal leg
- x-coordinate

$\cos \frac{\pi}{4}$   
  
 $= \frac{x}{x\sqrt{2}} = \frac{1}{\sqrt{2}} = \frac{\sqrt{2}}{2}$